



Caratteristiche tecniche:

- Scatola e bocchetta in acciaio con rivestimento in zinco
- Scrocco autobloccante
- Tensione 12 V ca CE
- Corrente assorbita 2,5A
- Cilindro esterno lunghezza 55 mm.

Dotazione:

- Bocchetta
- Foglio Istruzioni
- Viti fissaggio
- 3 chiavi art. 1.01070.10.1

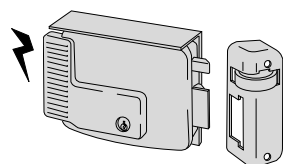
Certificazione:

- Questa serie di elettroserrature è certificata secondo la norma Europea EN 14846:08:
 - grado 3 Security (500 Kg. alla spinta laterale e 200 Kg. alla spinta frontale)

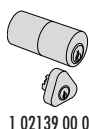
Mano:

- 1 = destra interna
- 2 = sinistra interna
- 3 = destra esterna
- 4 = sinistra esterna

Tipologia	Descrizione	Cilindro	Mandate	Entrata	Unitario	Pezzi	ARTICOLO			
							Tipo	Dim.	Mano	Fin. Pers. Spec.

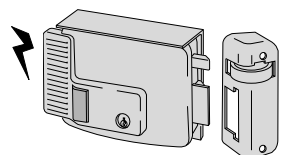


- Tettuccio protettivo
- Sottobocchetta

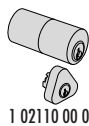


1 02139 00 0

50	2,090	1	1	11721	50	1
50	2,095	1	1	11721	50	2
60	2,091	1	1	11721	60	1
60	2,085	1	1	11721	60	2
70	2,090	1	1	11721	70	1
70	2,090	1	1	11721	70	2
80	2,090	1	1	11721	80	1
80	2,060	1	1	11721	80	2

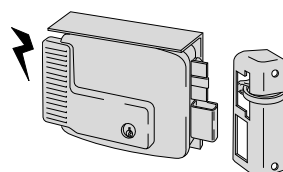


- Tettuccio protettivo
- Sottobocchetta
- Pulsante
- Fermo a giorno

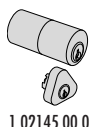


1 02110 00 0

50	2,100	1	1	11731	50	1
50	2,103	1	1	11731	50	2
60	2,085	1	1	11731	60	1
60	2,100	1	1	11731	60	2
70	2,100	1	1	11731	70	1
70	2,100	1	1	11731	70	2
80	2,100	1	1	11731	80	1
80	2,085	1	1	11731	80	2

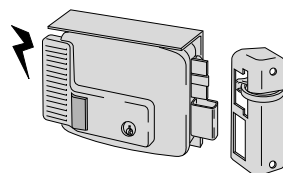


- Catenaccio a mandate manuali
- Tettuccio protettivo
- Sottobocchetta

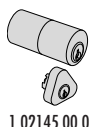


1 02145 00 0

2	50	2,200	1	1	11761	50	1
2	50	2,218	1	1	11761	50	2
2	60	2,216	1	1	11761	60	1
2	60	2,210	1	1	11761	60	2
2	70	2,200	1	1	11761	70	1
2	70	2,222	1	1	11761	70	2
2	80	2,230	1	1	11761	80	1
2	80	2,250	1	1	11761	80	2

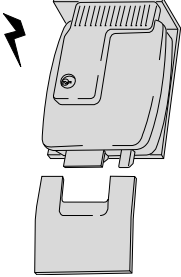
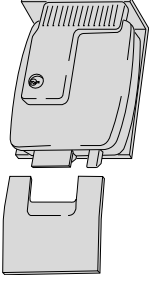
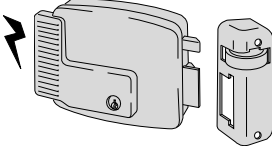

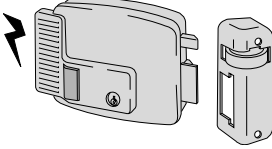
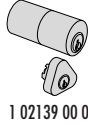
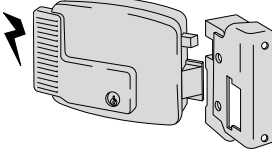
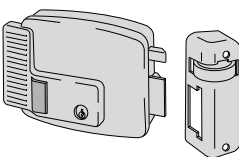
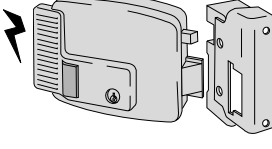



- Catenaccio a mandate manuali
- Tettuccio protettivo
- Sottobocchetta
- Pulsante



1 02145 00 0

2	50	2,205	1	1	11771	50	1
2	50	2,205	1	1	11771	50	2
2	60	2,200	1	1	11771	60	1
2	60	2,220	1	1	11771	60	2
2	70	2,210	1	1	11771	70	1
2	70	2,210	1	1	11771	70	2
2	80	2,231	1	1	11771	80	1
2	80	2,251	1	1	11771	80	2

Tipologia	Descrizione	Cilindro	Mandate	Entrata	Unitario	Pezzi	ARTICOLO				
							Tipo	Dim.	Mano	Fin.	Pers.
	<ul style="list-style-type: none"> • Per cancelli automatizzati e basculanti • Tettuccio protettivo • Cilindro esterno lunghezza 70 mm 	 1 02142 00 0	80	2,100	1	1	11823	80	1		
			80	2,100	1	1	11823	80	2		
		 1 02139 00 0	50	1,450	1	1	11921	50	1		
			50	1,450	1	1	11921	50	2		
			60	1,479	1	1	11921	60	1		
			60	1,472	1	1	11921	60	2		
			70	1,472	1	1	11921	70	1		
			70	1,476	1	1	11921	70	2		
			80	1,470	1	1	11921	80	1		
			80	1,475	1	1	11921	80	2		
	<ul style="list-style-type: none"> • Pulsante • Fermo a giorno 	 1 02110 00 0	50	1,475	1	1	11931	50	1		
			50	1,475	1	1	11931	50	2		
			60	1,470	1	1	11931	60	1		
			60	1,472	1	1	11931	60	2		
			70	1,475	1	1	11931	70	1		
			70	1,478	1	1	11931	70	2		
			80	1,470	1	1	11931	80	1		
			80	1,472	1	1	11931	80	2		
	<ul style="list-style-type: none"> • PER INFISSI CON APERTURA ESTERNA 	 1 02139 00 0	50	1,539	1	1	11921	50	3		
			50	1,538	1	1	11921	50	4		
			60	1,534	1	1	11921	60	3		
			60	1,534	1	1	11921	60	4		
			70	1,533	1	1	11921	70	3		
			70	1,538	1	1	11921	70	4		
			80	1,539	1	1	11921	80	3		
			80	1,534	1	1	11921	80	4		
	<ul style="list-style-type: none"> • PER INFISSI CON APERTURA ESTERNA • Pulsante • Fermo a giorno 	 1 02110 00 0	50	1,536	1	1	11931	50	3		
			50	1,530	1	1	11931	50	4		
			60	1,532	1	1	11931	60	3		
			60	1,532	1	1	11931	60	4		
			70	1,530	1	1	11931	70	3		
			70	1,534	1	1	11931	70	4		
			80	1,532	1	1	11931	80	3		
			80	1,532	1	1	11931	80	4		